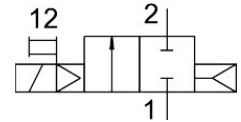
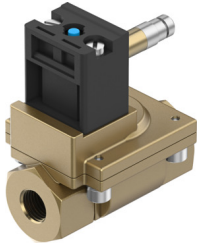


Solenoid valve MN1H-2-1/2-MS

Part number: 161728

FESTO



Data sheet

Feature	Value
Design	Diaphragm valve
Type of actuation	Electric
Sealing principle	Soft
Mounting position	optional
Type of mounting	In-line installation
Connection Process valve	G1/2
Electrical connection	Type A Plugs To DIN EN 175301-803 Square design
Nominal size	13 mm
Valve function	2/2-way, closed, monostable
Manual override	Detenting via accessory Non-detenting
Flow direction	Non-reversible
Medium	Filtered compressed air, grade of filtration 200 µm
Exhaust-air function	Without flow control option
Characteristic coil data	110 V AC: 50 Hz, pick-up power 5.0 VA, holding power 3.7 VA 110 V AC: 60 Hz, pick-up power 5.0 VA, holding power 3.7 VA 230 V AC: 50 Hz, pick-up power 5.0 VA, holding power 3.7 VA 230 V AC: 60 Hz, pick-up power 5.0 VA, holding power 3.7 VA 24 V DC: 2.5 W
Type of reset	Pneumatic spring
Type of piloting	Pilot actuated
Medium pressure	0.5 bar...10 bar
Note on operating and pilot medium	Lubricated operation possible (in which case lubricated operation will always be required)
Media temperature	-10 °C...60 °C
Ambient temperature	-10 °C...60 °C
Standard nominal flow rate (standardised to DIN 1343)	3100 l/min
Switching time on	30 ms
Switching time off	100 ms
LABS (PWIS) conformity	VDMA24364-B1/B2-L
Material housing	Brass

Feature	Value
Material screws	High-alloy stainless steel
Material number screw	1.4301
Product weight	400 g
Degree of protection	IP65 With plug socket