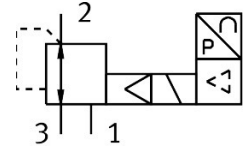


Proportional-pressure regulator MPPE-3-1/8-1-010-B

Part number: 161160

FESTO



Data sheet

Feature	Value
Nominal size, supply	5 mm
Nominal size, exhaust	5 mm
Type of actuation	Electric
Sealing principle	Soft
Mounting position	optional
Design	Piloted piston regulator
Short circuit current rating	For all electrical connections
Safety instructions	Safety position MPPE-B: if the power supply cable is interrupted, output pressure is maintained unregulated.
Reverse polarity protection	For all electrical connections
Valve function	3-way proportional-pressure regulator, closed
Operating pressure	0.2 MPa 2 bar
Pressure regulation range	0 MPa...0.1 MPa 0 bar...1 bar
Inlet pressure 1	1.5 bar...2 bar 0.15 MPa...0.2 MPa
Max. pressure hysteresis	0.003 MPa 0.03 bar
Switching time off	165 ms
Switching time on	95 ms
Operational voltage range DC	18 V...30 V
Reference voltage	10 V
Residual ripple	10 %
SETPOINT/ACTUAL values	Voltage type 0 - 10 V
Operating medium	Compressed air to ISO 8573-1:2010 [7:4:4] Inert gases
Note on operating and pilot medium	Lubricated operation possible (in which case lubricated operation will always be required)
Approval	RCM trademark
KC mark	KC-EMV
CE mark (see declaration of conformity)	To EU EMC Directive In accordance with EU RoHS Directive

Feature	Value
CE marking (see declaration of conformity)	To UK instructions for EMC To UK RoHS instructions
Corrosion resistance class CRC	2 - Moderate corrosion stress
LABS (PWIS) conformity	VDMA24364-B2-L
Media temperature	0 °C...60 °C
Degree of protection	IP65
Ambient temperature	0 °C...50 °C
Product weight	710 g
Electrical connection	8-pin M16x0.75 Plugs To DIN 45326 Round design
Type of mounting	With through-hole
Pneumatic connection, port 1	G1/8
Pneumatic connection, port 2	G1/8
Pneumatic connection, port 3	G1/8
Note on materials	RoHS-compliant
Material housing	Wrought aluminium alloy
Material membrane	NBR