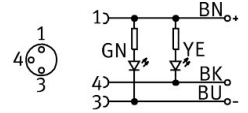


Connecting cable SIM-M8-3WD-2,5-NSL-PU

Part number: 159426

FESTO



Data sheet

Feature	Value
Conforms to standard	EN 61076-2-104 EN 61984
Ready status indication	Green LED
Switching status indication	Yellow LED
Electrical connection	3-pin/3-wire Angled socket/open end M8x1/-
Operational voltage range DC	10 V...30 V
Current rating at 40° C	4 A
Immunity to surge	0.8 kV
Cable length	2.5 m
Cable characteristic	Standard
Test conditions cable	Bending strength: to Festo standard Test conditions on request Energy chain: > 5 million cycles, bending radius 75 mm
Cable diameter	3.8 mm
Cable structure	3 x 0.25 mm ²
Nominal cross section conductor	0.25 mm ²
Colour code wire insulation	Blue Brown Black
Degree of protection	IP65 IP68
Ambient temperature	-25 °C...80 °C
Ambient temperature with moving cable	-5 °C...80 °C
CE mark (see declaration of conformity)	In accordance with EU RoHS Directive
CE marking (see declaration of conformity)	To UK RoHS instructions
LABS (PWIS) conformity	VDMA24364-B2-L
Note on materials	RoHS-compliant Free of halogen Free of phosphoric acid ester
Pollution degree	3
Corrosion resistance class CRC	2 - Moderate corrosion stress
Material cable sheath	TPE-U(PU)

Feature	Value
Cable sheath colour	Grey
Material housing	TPE-U(PU)
Housing colour	Black
Material union nut	Nickel-plated brass
Material seals	NBR
Material electrical contact	Gold-plated brass
Material insulating sheath	PP