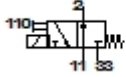


MODH-3-2,2-QS-6-110AC

Solenoid valve

Feature	Data/description
Width	42 mm
Nominal size	2,2 mm
Type of actuation	electrical
Sealing principle	soft
Assembly position	Any
Manual override	with accessories, detenting
Design structure	Poppet seat
Type of reset	mechanical spring
Type of piloting	direct
Flow direction	non reversible
Valve function	3/2 monostable
Operating pressure	-0,9 - 8 bar
b value	0,1
C value	0,46 l/sbar
Standard nominal flow rate	96 l/min
Switching time off	15 ms
Switching time on	10 ms
Duty cycle	100%
Characteristic coil data	110V AC: 50/60Hz, AL12W,HL8W
Operating medium	Neutral gases Dried compressed air, lubricated or unlubricated
CE Symbol	73/23EEC (low voltage)
Corrosion resistance classification CRC	2



MODH-3-2,2-QS-6-110AC

Solenoid valve

Feature	Data/description
Medium temperature	-5 - 50 °C
Protection class	IP65
Ambient temperature	-5 - 60 °C
Product weight	370 g
Electrical connection	Plug to DIN 43650 Cubic design Design A
Mounting type	with through hole
Pneumatic connection, port 1	QS-6
Pneumatic connection, port 2	QS-6
Pneumatic connection, port 3	QS-6
Materials information for sub-base	POM
Materials information for seals	NBR
Materials information, housing	POM