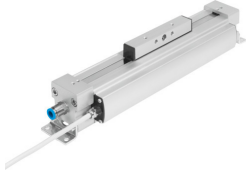


Linear drive DDLI-63- -

Part number: 1572299

FESTO



Data sheet

Feature	Value
Stroke	100 mm...2000 mm
Piston diameter	63 mm
Cushioning	Elastic cushioning rings/plates at both ends
Mounting position	optional
Position detection	With integrated displacement encoder
Operating pressure	0.15 MPa...0.8 MPa 1.5 bar...8 bar 21.75 psi...116 psi
Mode of operation	Double-acting
Approval	RCM trademark
CE mark (see declaration of conformity)	To EU EMC Directive In accordance with EU RoHS Directive
UKCA marking (see declaration of conformity)	To UK instructions for EMC To UK RoHS instructions
Operating medium	Compressed air to ISO 8573-1:2010 [6:4:4]
Note on operating and pilot medium	Lubricated operation not possible
Corrosion resistance class CRC	1 - Low corrosion stress
LABS (PWIS) conformity	VDMA24364-B2-L
Ambient temperature	-10 °C...60 °C
Theoretical force at 0.6 MPa (6 bar, 87 psi), return stroke	1870 N
Theoretical force at 0.6 MPa (6 bar, 87 psi), advance stroke	1870 N
Type of mounting	With accessories
Pneumatic connection	G3/8
Material cover	Wrought aluminium alloy
Material seals	NBR TPE-U(PU)