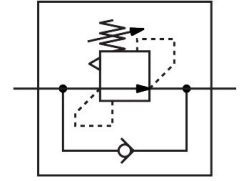


# Differential pressure regulator

## LRL-1/2-QS-12

Part number: 153521

FESTO



## Data sheet

| Feature                            | Value  |
|------------------------------------|--|
| Controller function                | Differential pressure constant<br>With return flow function                                |
| Pneumatic connection, port 1       | G1/2   |
| Pneumatic connection, port 2       | QS-12  |
| Type of mounting                   | Screw-in   |
| Nominal flow rate open             | 760 l/min  |
| Pressure regulation range          | 2 bar...6 bar  |
| Inlet pressure 1                   | 0 MPa...0.9 MPa<br>0 bar...9 bar<br>0 psi...130.5 psi                                      |
| Ambient temperature                | 0 °C...60 °C   |
| Material housing                   | PBT-reinforced   |
| Operating medium                   | Compressed air to ISO 8573-1:2010 [7:...]  |
| Actuator lock                      | Counter-locking  |
| Mounting position                  | optional   |
| Design                             | Directly actuated piston regulator<br>With through compressed air supply                   |
| Nominal flow rate closed           | 730 l/min  |
| Note on operating and pilot medium | Lubricated operation possible (in which case lubricated operation will always be required) |
| LABS (PWIS) conformity             | VDMA24364-B1/B2-L  |
| Product weight                     | 110 g  |
| Material screwed plug              | Nickel-plated brass  |
| Note on materials                  | RoHS-compliant   |
| Material thread seal               | PTFE   |