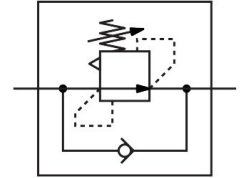


# Differential pressure regulator LRL1-1/2-QS-12

Part number: 153509

FESTO



## Data sheet

Feature	Value
Controller function	Differential pressure constant With return flow function
Pneumatic connection, port 1	G1/2
Pneumatic connection, port 2	QS-12
Type of mounting	Screw-in
Nominal flow rate open	730 l/min
Pressure regulation range	2 bar...6 bar
Inlet pressure 1	0 MPa...0.9 MPa 0 bar...9 bar 0 psi...130.5 psi
Ambient temperature	0 °C...60 °C
Material housing	PBT-reinforced
Operating medium	Compressed air to ISO 8573-1:2010 [7:...]
Actuator lock	Counter-locking
Mounting position	optional
Design	Directly actuated piston regulator With through compressed air supply
Nominal flow rate closed	700 l/min
Note on operating and pilot medium	Lubricated operation possible (in which case lubricated operation will always be required)
LABS (PWIS) conformity	VDMA24364-B1/B2-L
Product weight	105 g
Material screwed plug	Nickel-plated brass
Note on materials	RoHS-compliant
Material thread seal	PTFE