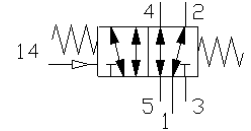
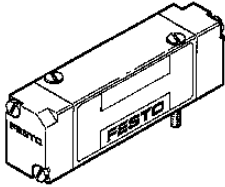


Pneumatic VL-5/2-4,0

Part number: 152786

FESTO



Datasheet

Feature	Value
A1 Switching function symbol	S5A
A2 Switching function short code	5/2
A2B Direction of flow reversible	ja
A3 Operational principle	Schieber
A3A Form operating component	Kolben
A5 Non-overlapping	ja
A6 Type of control	direkt
A7 Type of setting	monostabil
A8 Type of reset	mechanische Feder
B5 Type of mounting	Schraubbefestigung
B6 Number mounting options	-
C Nominal size	4 mm
D1 Operating pressure min.	-0,9 bar
D2 Operating pressure max.	8 bar
D3 Minimum ambient temperature	-5 Cel
D4 Maximum ambient temperature	50 Cel
D5 Minimum temperature of medium	-5 Cel
D6 Maximum temperature of medium	50 Cel
D7 Start-/switch pilot pressure at D1	1,5 bar
E1A Connection type power ports	Platte
E1B Working port ducted exhaust	ja
E1C Connection type control ports	Platte
F3 Standard plate connection diagram	MD40
G1 Actuation/Reset	P01:R01
G2 Manual override	nein
J3 LABS criterion	frei
K1A Normal nominal flow 1 - 2	500 l/min
L2 Switching time ON/UM(dom) acc.to FN	8 ms
L3 Switching time OFF/UM according to FN	26 ms
R2 Medium of operation	L33:L53:V2:V3
R3 Medium of control	L33:L53