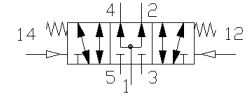
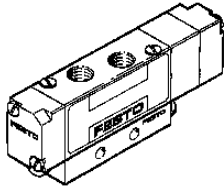


Pneumatic VL-5/3B-1/8

Part number: 152785

FESTO



Datasheet

| Feature | Value |
|---|--------------------|
| A1 Switching function symbol | S5D |
| A2 Switching function short code | 5/3 |
| A2A Functioning in mid-position (neutral) | belüftet |
| A2B Direction of flow reversible | ja |
| A3 Operational principle | Schieber |
| A3A Form operating component | Kolben |
| A5 Non-overlapping | ja |
| A6 Type of control | direkt |
| A7 Type of setting | monostabil |
| A8 Type of reset | mechanische Feder |
| B5 Type of mounting | Schraubbefestigung |
| B6 Number mounting options | - |
| C Nominal size | 4 mm |
| D1 Operating pressure min. | -0,9 bar |
| D2 Operating pressure max. | 8 bar |
| D3 Minimum ambient temperature | -5 Cel |
| D4 Maximum ambient temperature | 50 Cel |
| D5 Minimum temperature of medium | -5 Cel |
| D6 Maximum temperature of medium | 50 Cel |
| D7 Start-/switch pilot pressure at D1 | 3 bar |
| E1A Connection type power ports | Gewinde |
| E1B Working port ducted exhaust | ja |
| E1C Connection type control ports | Gewinde |
| E22 Thread type (working port) | G |
| E26 Thread diameter (inch) | 1/8 Zoll |
| E42 Thread type (control ports) | M |
| E43 Thread diameter (metr.) | 5 mm |
| G1 Actuation/Reset | P05:P05 |
| G2 Manual override | nein |
| J3 LABS criterion | frei |
| K1A Normal nominal flow 1 - 2 | 550 l/min |
| L2 Switching time ON/UM(dom) acc.to FN | 5 ms |
| L3 Switching time OFF/UM according to FN | 5 ms |

| Feature | Value |
|------------------------|---------------|
| R2 Medium of operation | L33:L53:V2:V3 |
| R3 Medium of control | L33:L53 |