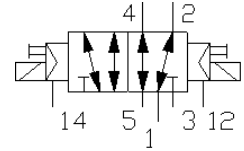
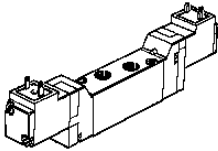


# Double JMEH-5/2-1/8P-S

Part number: 152501

FESTO



## Datasheet

Feature	Value
A1 Switching function symbol	S5A
A2 Switching function short code	5/2
A2B Direction of flow reversible	ja
A3 Operational principle	Schieber
A3A Form operating component	Kolben
A5 Non-overlapping	ja
A6 Type of control	indirekt
A7 Type of setting	bistabil
B5 Type of mounting	Schraub
B6 Number mounting options	-
C Nominal size	4 mm
D1 Operating pressure min.	-0,9 bar
D2 Operating pressure max.	8 bar
D3 Minimum ambient temperature	-5 Cel
D4 Maximum ambient temperature	50 Cel
D5 Minimum temperature of medium	-5 Cel
D6 Maximum temperature of medium	50 Cel
D7 Start-/switch pilot pressure at D1	1,5 bar
E1A Connection type power ports	Platte+Gewinde
E1B Working port ducted exhaust	ja
E1C Connection type pilot pressure ventil.	Gewinde
E1D Connection type pilot pressure exhaust	Platte
E22 Thread type (working port)	G
E26 Thread diameter (inch)	1/8 Zoll
E42 Thread type (pilot air ventilation)	M
E43 Thread diameter (metr.)	3 mm
G1 Actuation/Reset	E08:E08
G2 Manual override	stoss-rück
G3 Operating status display	nein
J3 LABS criterion	frei
K1A Normal nominal flow 1 - 2	500 l/min
L3 Switching time OFF/UM according to FN	10 ms
N Magnetic system (sizing)	E

<b>Feature</b>	<b>Value</b>
P1 Type of voltage	../DC
P2A Nominal direct current	24 V
P3A Rating (DC)	1,5 W
R2 Medium of operation	L33:L53:V2:V3
R3 Medium of control	L33:L53
S Protection class	-