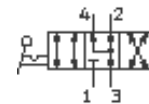
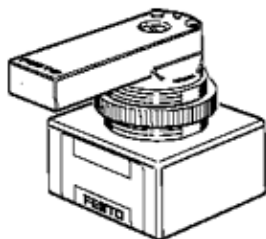


Hand lever valve HSO-4/3-1/8-B

Part number: 151843

FESTO

4/3-way valve with hand lever, open in mid position.
Discontinued, available through 2006
This type is suitable for vacuum. Vacuum connection at port 3 (R).



Data sheet

| Feature | Value |
|---------------------------------|--------------------|
| Standard nominal flow rate | 700 l/min |
| Pneumatic connection, port 2 | G1/8 |
| Pneumatic connection, port 4 | G1/8 |
| Operating pressure | -0.95 ... 10 bar |
| Design structure | Rotary slide valve |
| Nominal size | 6 mm |
| Medium temperature | -20 ... 60 °C |
| Ambient temperature | -20 ... 60 °C |
| Actuation torque | 1 Nm |
| Product weight | 120 g |
| Mounting type | with through hole |
| Pneumatic connection, port 1 | G1/8 |
| Pneumatic connection, port 3 | G1/8 |
| Materials information for seals | NBR |
| Materials information, housing | Plastic |