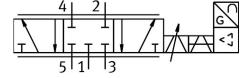


Proportional directional control valve MPYE-5-1/8-LF-010-B

Part number: 151692

FESTO



Data sheet

| Feature | Value |
|---|--|
| Nominal size | 4 mm |
| Type of actuation | Electric |
| Sealing principle | Hard |
| Mounting position | optional |
| Design | Piston gate valve |
| Type of reset | Magnetic spring |
| Safety instructions | Safety position MPYE: if the power supply cable is blocked, the valve assumes the closed mid-position. |
| Type of piloting | Direct |
| Flow direction | Non-reversible |
| Valve function | 5/3 closed |
| Reverse polarity protection | For all electrical connections |
| Operating pressure | 0 MPa...1 MPa 0 bar...10 bar |
| b value | 0.12 |
| C value | 1.65 l/sbar |
| Standard nominal flow rate (standardised to DIN 1343) | 350 l/min |
| Limit frequency | 95 Hz |
| Max. hysteresis | 0.4 % |
| Operational voltage range DC | 17 V...30 V |
| Residual ripple | 5 % |
| SETPOINT/ACTUAL values | Voltage type 0 - 10 V |
| Approval | RCM trademark |
| KC mark | KC-EMV |
| CE mark (see declaration of conformity) | To EU EMC Directive In accordance with EU RoHS Directive |
| UKCA marking (see declaration of conformity) | To UK instructions for EMC To UK RoHS instructions |
| Operating medium | Compressed air to ISO 8573-1:2010 [6:4:4] |
| Note on operating and pilot medium | Lubricated operation not possible |
| Corrosion resistance class CRC | 2 - Moderate corrosion stress |
| LABS (PWIS) conformity | VDMA24364-B2-L |

| Feature | Value |
|------------------------------|---|
| Media temperature | 5 °C...40 °C |
| Degree of protection | IP65 |
| Ambient temperature | 0 °C...50 °C |
| Product weight | 285 g |
| Electrical connection | 4-pin M12x1 Plugs Round design |
| Type of mounting | With through-hole |
| Pneumatic connection, port 1 | G1/8 |
| Pneumatic connection, port 2 | G1/8 |
| Pneumatic connection, port 3 | G1/8 |
| Pneumatic connection, port 4 | G1/8 |
| Pneumatic connection, port 5 | G1/8 |
| Note on materials | RoHS-compliant |
| Material cover | ABS Coated |
| Material seals | NBR |
| Material housing | Aluminium Anodised |