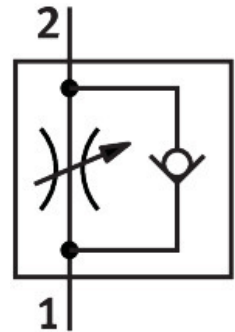


One-way flow control valve GRLA-3/8-NPT-B

Part number: 151555

FESTO



Data sheet

Feature	Value
Valve function	Exhaust air one-way flow control function
Pneumatic connection, port 1	3/8 NPT
Pneumatic connection, port 2	3/8 NPT
Adjustment component	Slotted head screw
Type of mounting	Screw-in
Ambient temperature	-10 °C...60 °C
Operating pressure complete temperature range	0.3 bar...10 bar
Operating medium	Compressed air to ISO 8573-1:2010 [7:4:4]
Note on operating and pilot medium	Lubricated operation possible (in which case lubricated operation will always be required)
LABS (PWIS) conformity	VDMA24364-B2-L
Cleanroom class	Class 4 according to ISO 14644-1
Media temperature	-10 °C...60 °C
Note on materials	RoHS-compliant
Material seals	NBR
Material hollow bolt	Wrought aluminium alloy
Material adjusting screw	Brass
Material nut	Wrought aluminium alloy
Material swivel fitting	Die-cast zinc