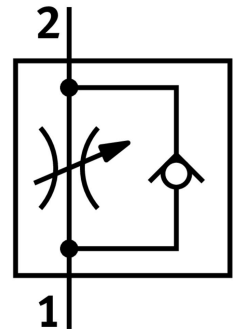


One-way flow control valve GRLZ-1/8-PK-6-B

Part number: 151191

FESTO



Data sheet

Feature	Value
Valve function	Supply air one-way flow control function
Pneumatic connection, port 1	PK-6 with union nut
Pneumatic connection, port 2	G1/8
Adjustment component	Slotted head screw
Type of mounting	Screw-in
Standard nominal flow rate in flow control direction	300 l/min
Standard nominal flow rate in blocked direction	210 l/min...290 l/min
Ambient temperature	-10 °C...60 °C
Explosion protection	The information in the certificate must be observed! Zone 1 (ATEX) Zone 2 (ATEX) Zone 21 (ATEX) Zone 22 (ATEX)
Mounting position	optional
Operating pressure complete temperature range	0.3 bar...10 bar
Standard flow rate in flow control direction 0.6-10 MPa (6-100 psi)	455 l/min
Standard flow rate in non-return direction 0.6-10 MPa (6-100 psi)	320 l/min...440 l/min
Operating medium	Compressed air to ISO 8573-1:2010 [7:4:4]
Note on operating and pilot medium	Lubricated operation possible (in which case lubricated operation will always be required)
LABS (PWIS) conformity	VDMA24364-B1/B2-L
Cleanroom class	Class 4 according to ISO 14644-1
Media temperature	-10 °C...60 °C
Max. tightening torque	6 Nm
Product weight	26 g
Material screwed plug	Wrought aluminium alloy

Feature	Value
Note on materials	RoHS-compliant
Material seals	NBR
Material adjusting screw	Brass
Material swivel fitting	Die-cast zinc