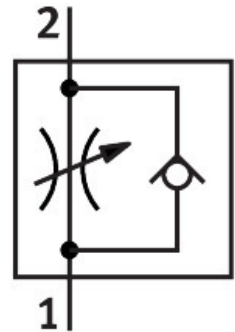


One-way flow control valve GRLZ-M5-RS-B

Part number: 151186

FESTO



Data sheet

Feature	Value
Valve function	Supply air one-way flow control function
Pneumatic connection, port 1	M5
Pneumatic connection, port 2	M5
Adjustment component	Knurled screw
Type of mounting	Screw-in
Standard nominal flow rate in flow control direction	95 l/min
Standard nominal flow rate in blocked direction	76 l/min...95 l/min
Operating pressure	0.2 bar...10 bar
Ambient temperature	-10 °C...60 °C
Explosion protection	The information in the certificate must be observed! Zone 1 (ATEX) Zone 2 (ATEX) Zone 21 (ATEX) Zone 22 (ATEX)
Mounting position	optional
Standard flow rate in flow control direction 0.6->0 MPa (6->0 bar, 87->0 psi)	169 l/min
Standard flow rate in non-return direction 0.6->0 MPa (6->0 bar, 87->0 psi)	135 l/min...170 l/min
Operating medium	Compressed air to ISO 8573-1:2010 [7:4:4]
Note on operating and pilot medium	Lubricated operation possible (in which case lubricated operation will always be required)
LABS (PWIS) conformity	VDMA24364-B1/B2-L
Cleanroom class	Class 4 according to ISO 14644-1
Media temperature	-10 °C...60 °C
Nominal size	2 mm
Max. tightening torque	1.5 Nm
Product weight	12 g

Feature	Value
Material screwed plug	Brass Nickel-plated
Note on materials	RoHS-compliant
Material seals	NBR
Material adjusting screw	Brass
Material swivel fitting	Die-cast zinc