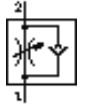


# One-way flow control valve GRLA-1/8-PK-4-RS-B

Part number: 151170

FESTO

For exhaust air flow control, with swivel joint.



## Data sheet

Feature	Value
Valve function	One-way flow control function for exhaust air
Pneumatic connection, port 1	PK-4 with sleeve nut
Pneumatic connection, port 2	G1/8
Adjusting element	Knurled screw
Mounting type	Threaded
Standard nominal flow rate in flow control direction	230 l/min
Standard nominal flow rate in non-return direction	190 ... 240 l/min
Operating pressure	0.3 ... 10 bar
Ambient temperature	-10 ... 60 °C
Operating medium	Filtered, unlubricated compressed air, 40 µm filtration Filtered, lubricated compressed air, 40 µm filtration
Authorisation	Germanischer Lloyd
Assembly position	Any
Standard flow rate in direction of flow control: 6 -> 0 bar	360 l/min
Standard flow rate in blocked direction: 6 -> 0 bar	295 ... 375 l/min
Medium temperature	-10 ... 60 °C
Max. tightening torque	6 Nm
Product weight	25 g
Materials information for screw-in stud	Wrought Aluminium alloy
Materials information for seals	NBR
Regulating screw material data	Brass
Swivel joint material data	Zinc die-casting