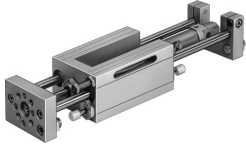


# Linear drive unit SLE-50- -KF-A

Part number: 150921

**FESTO**



## Data sheet

Feature	Value
Stroke	10 mm...500 mm
Piston diameter	50 mm
Operating mode, drive unit	Yoke
Cushioning	Shock absorber, hard characteristic curve
Mounting position	optional
Guide	Recirculating ball bearing guide
Design	Guidance
Position detection	Via proximity switch Via inductive sensors
Operating pressure	0.15 MPa...1.2 MPa 1.5 bar...12 bar
Mode of operation	Double-acting
Operating medium	Compressed air to ISO 8573-1:2010 [7:4:4]
Note on operating and pilot medium	Lubricated operation possible (in which case lubricated operation will always be required)
Corrosion resistance class CRC	0 - No corrosion stress
LABS (PWIS) conformity	VDMA24364-B2-L
Ambient temperature	-20 °C...80 °C
Theoretical force at 0.6 MPa (6 bar, 87 psi), return stroke	990 N
Theoretical force at 0.6 MPa (6 bar, 87 psi), advance stroke	1178 N
Moving mass for 0 mm stroke	3600 g
Additional moving mass per 10 mm stroke	77 g
Basic weight for 0 mm stroke	9200 g
Additional weight per 10 mm stroke	125 g
Pneumatic connection	G1/4
Material cover	Die-cast aluminium
Material seals	PA
Material housing	Die-cast aluminium
Material piston rod	High-alloy steel
Material cylinder barrel	Wrought aluminium alloy