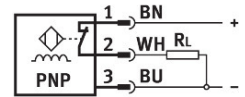
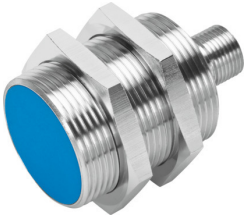


# Proximity sensor SIEN-M30B-PO-S-L

Part number: 150439

FESTO



## Data sheet

| Feature                                 | Value  |
|---|--|
| Conforms to standard                    | EN 60947-5-2   |
| Approval                                | RCM trademark<br>c UL us listed (OL)   |
| CE mark (see declaration of conformity) | To EU EMC Directive  |
| Note on materials                       | RoHS-compliant   |
| Rated operating distance                | 10 mm  |
| Assured operating distance              | 8.1 mm   |
| Reduction factors                       | Aluminium = 0.45<br>Stainless steel St 18/8 = 0.8<br>Copper = 0.4<br>Brass = 0.55<br>Steel St 37 = 1.0 |
| Ambient temperature                     | -25 °C...70 °C   |
| Repetition accuracy                     | 0.5 mm   |
| Switching output                        | PNP  |
| Switching element function              | N/C contact  |
| Hysteresis                              | 1.1 mm   |
| Max. switching frequency                | 1200 Hz  |
| Max. output current                     | 200 mA   |
| Voltage drop                            | 2 V  |
| Short circuit current rating            | Pulsed   |
| Operational voltage range DC            | 10 V...30 V  |
| Residual ripple                         | +/- 20 %   |
| No-load supply current                  | 10 mA  |
| Reverse polarity protection             | For all electrical connections   |
| Electrical connection                   | 3-pin<br>M12x1<br>Plugs  |
| Size                                    | M30x1.5  |
| Type of mounting                        | Via lock nut   |
| Tightening torque                       | 40 Nm  |
| Mounting type                           | Flush  |
| Product weight                          | 100 g  |

| <b>Feature</b>                              | <b>Value</b>                         |
|---|--------------------------------------|
| Material housing                            | Brass<br>PA<br>PBTP<br>Chrome-plated |
| Switching status indication                 | Yellow LED                           |
| Ambient temperature with moving cable       | -5 °C...70 °C                        |
| Degree of protection                        | IP67                                 |
| Immunity to surge                           | 0.8 kV                               |
| LABS (PWIS) conformity                      | VDMA24364-B2-L                       |
| Pollution degree                            | 3                                    |
| Additional information for sensor selection | with standard sensing distance       |
| Electrical output                           | PNP                                  |
| Selection of sensor design                  | Standard                             |