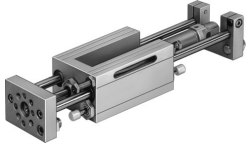


Linear drive unit SLE-20- -KF-A

Part number: 150091

FESTO



Data sheet

Feature	Value
Stroke	10 mm...320 mm
Piston diameter	20 mm
Operating mode, drive unit	Yoke
Cushioning	Shock absorber, hard characteristic curve
Mounting position	optional
Guide	Recirculating ball bearing guide
Design	Guidance
Position detection	Via proximity switch Via inductive sensors
Operating pressure	0.25 MPa...1 MPa 2.5 bar...10 bar
Mode of operation	Double-acting
Operating medium	Compressed air to ISO 8573-1:2010 [7:4:4]
Note on operating and pilot medium	Lubricated operation possible (in which case lubricated operation will always be required)
Corrosion resistance class CRC	0 - No corrosion stress
LABS (PWIS) conformity	VDMA24364-B2-L
Ambient temperature	-20 °C...80 °C
Theoretical force at 0.6 MPa (6 bar, 87 psi), return stroke	158 N
Theoretical force at 0.6 MPa (6 bar, 87 psi), advance stroke	188 N
Moving mass for 0 mm stroke	500 g
Additional moving mass per 10 mm stroke	12 g
Basic weight for 0 mm stroke	1882 g
Additional weight per 10 mm stroke	19 g
Pneumatic connection	G1/8
Material cover	Wrought aluminium alloy
Material seals	PA
Material housing	Aluminium
Material piston rod	High-alloy stainless steel
Material cylinder barrel	High-alloy stainless steel