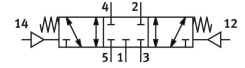


Pneumatic valve VL-5/3G-3/8-B

Part number: 14950

FESTO



Data sheet

Feature	Value
Valve function	5/3 closed
Type of actuation	Pneumatic
Construction width	40 mm
Standard nominal flow rate (standardised to DIN 1343)	2000 l/min
pneumatic working port	G3/8
Operating pressure	-0.09 MPa...1 MPa -0.9 bar...10 bar
Design	Piston gate valve
Type of reset	Mechanical spring
Nominal size	12 mm
Grid dimension	41 mm
Exhaust-air function	With flow control option
Sealing principle	Soft
Mounting position	optional
Manual override	None
Type of piloting	Direct
Pilot air supply	External
Flow direction	Reversible
lap	Overlap
Pilot pressure	0.3 MPa...1 MPa 3 bar...10 bar
Max. switching frequency	3 Hz
Switching time off	28 ms
Switching time on	7 ms
Switching time reversal	54 ms
Operating medium	Compressed air to ISO 8573-1:2010 [7:4:4]
Note on operating and pilot medium	Lubricated operation possible (in which case lubricated operation will always be required)
Corrosion resistance class CRC	1 - Low corrosion stress
LABS (PWIS) conformity	VDMA24364-B1/B2-L
Storage temperature	-40 °C...60 °C
Media temperature	-10 °C...60 °C

Feature	Value
Pilot medium	Compressed air to ISO 8573-1:2010 [7:4:4]
Ambient temperature	-10 °C...60 °C
Product weight	680 g
Type of mounting	On PR rail With through-hole Either:
Pilot air port 12	G1/8
Pilot air port 14	G1/8
Pneumatic connection, port 1	G3/8
Pneumatic connection, port 2	G3/8
Pneumatic connection, port 3	G3/8
Pneumatic connection, port 4	G3/8
Pneumatic connection, port 5	G3/8
Note on materials	RoHS-compliant
Material seals	NBR
Material housing	Die-cast aluminium