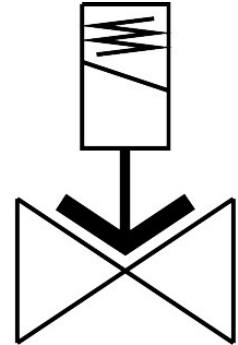


Solenoid valve

VZWF-L-M22C-N112-400-2AP4-10

Part number: 1492260

FESTO



Data sheet

| Feature | Value |
|----------------------------------|--|
| Design | Diaphragm valve Force pilot operated |
| Type of actuation | Electric |
| Sealing principle | Soft |
| Mounting position | Solenoid vertical |
| Type of mounting | In-line installation |
| Connection Process valve | 1 1/2 NPT |
| Electrical connection | Type A Plugs To EN 175301-803 Square design |
| Nominal size | 40 mm |
| Valve function | 2/2-way, closed, monostable |
| Manual override | None |
| Flow direction | Non-reversible |
| Medium | Compressed air to ISO 8573-1:2010 [7:--:--] Inert gases Mineral oil Water Neutral fluids Other media on request |
| Nominal pressure PN | 40 |
| Pressure difference | 0 MPa 0 bar 0 psi |
| Characteristic coil data | 110 V AC: 50/60 Hz, pick-up power 30.0 VA, holding power 30.0 VA |
| Permissible voltage fluctuations | +/- 10 % |
| Medium pressure | 0 MPa...1 MPa 0 bar...10 bar 0 psi...145 psi |

| Feature | Value |
|---|--|
| Max. viscosity | 22 mm ² /s |
| Media temperature | -10 °C...80 °C |
| Ambient temperature | -10 °C...35 °C |
| Leakage rate to EN 12266-1 | A |
| Flow rate Kv | 22.5 m ³ /h |
| Standard nominal flow rate (standardised to DIN 1343) | 23500 l/min |
| Switching time on | 620 ms |
| Switching time off | 1140 ms |
| Note on materials | RoHS-compliant |
| LABS (PWIS) conformity | VDMA24364 zone III |
| Material housing | Cast brass |
| Material number housing | CW617N |
| Material seals | NBR |
| Material screws | High-alloy stainless steel |
| Material number screw | 1.4301 |
| Product weight | 4500 g |
| CE mark (see declaration of conformity) | In accordance with EU Pressure Equipment Directive To EU Low Voltage Directive |
| UKCA marking (see declaration of conformity) | to UK Pressure Equipment Regulations To UK regulations for electrical equipment |
| Degree of protection | IP65 |
| Corrosion resistance class CRC | 1 - Low corrosion stress |