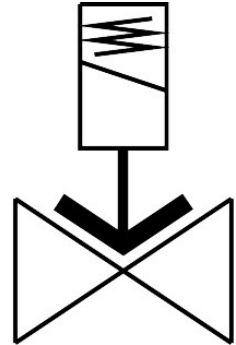


Solenoid valve

VZWF-L-M22C-G2-500-E-1P4-6

Part number: 1492133

FESTO



Data sheet

Feature	Value
Design	Diaphragm valve Force pilot operated
Type of actuation	Electric
Sealing principle	Soft
Mounting position	Solenoid vertical
Type of mounting	In-line installation
Connection Process valve	G2
Electrical connection	Type A Plugs To EN 175301-803 Square design
Nominal size	50 mm
Valve function	2/2-way, closed, monostable
Manual override	None
Flow direction	Non-reversible
Medium	Compressed air to ISO 8573-1:2010 [7:--:] Inert gases Mineral oil Water Neutral fluids Other media on request
Nominal pressure PN	40
Pressure difference	0 MPa 0 bar 0 psi
Characteristic coil data	24 V DC: 30.0 W
Permissible voltage fluctuations	+/- 10 %
Medium pressure	0 MPa...0.6 MPa 0 bar...6 bar 0 psi...87 psi

Feature	Value
Max. viscosity	22 mm ² /s
Media temperature	-10 °C...80 °C
Ambient temperature	-10 °C...35 °C
Leakage rate to EN 12266-1	A
Flow rate Kv	28 m ³ /h
Standard nominal flow rate (standardised to DIN 1343)	29900 l/min
Switching time on	1220 ms
Switching time off	2140 ms
Note on materials	RoHS-compliant
LABS (PWIS) conformity	VDMA24364 zone III
Material housing	Cast brass
Material number housing	CW617N
Material seals	EPDM
Material screws	High-alloy stainless steel
Material number screw	1.4301
Product weight	6500 g
CE mark (see declaration of conformity)	In accordance with EU Pressure Equipment Directive
Degree of protection	IP65
Corrosion resistance class CRC	1 - Low corrosion stress