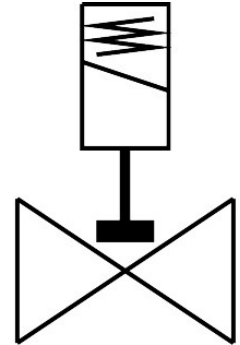


# Solenoid valve

## VZWD-L-M22C-M-G14-25-V-1P4-22

Part number: 1491843

FESTO



## Data sheet

| Feature                          | Value  |
|----------------------------------|--|
| Design                           | Directly actuated poppet valve   |
| Type of actuation                | Electric   |
| Sealing principle                | Soft   |
| Mounting position                | optional   |
| Type of mounting                 | In-line installation   |
| Connection Process valve         | G1/4   |
| Electrical connection            | Type A<br>Plugs<br>To EN 175301-803<br>Square design   |
| Nominal size                     | 2.5 mm   |
| Valve function                   | 2/2-way, closed, monostable  |
| Manual override                  | None   |
| Flow direction                   | Non-reversible   |
| Medium                           | Compressed air to ISO 8573-1:2010 [7:4:4]<br>Inert gases<br>Mineral oil<br>Water<br>Neutral fluids<br>Other media on request |
| Nominal pressure PN              | 100  |
| Pressure difference              | 0 MPa<br>0 bar<br>0 psi  |
| Characteristic coil data         | 24 V DC: 11.0 W  |
| Insulation material class        | H  |
| Permissible voltage fluctuations | +/- 10 %   |
| Duty cycle                       | 100%   |
| Type of reset                    | Mechanical spring  |

| Feature   | Value  |
|---|--|
| Type of piloting                                      | Direct   |
| Medium pressure                                       | 0 MPa...2.2 MPa<br>0 bar...22 bar<br>0 psi...319 psi |
| Max. viscosity  | 22 mm <sup>2</sup> /s                                |
| Media temperature                                     | -10 °C...80 °C                                       |
| Ambient temperature                                   | -10 °C...35 °C                                       |
| Leakage rate to EN 12266-1                            | A  |
| Flow rate Kv  | 0.16 m <sup>3</sup> /h                               |
| Standard nominal flow rate (standardised to DIN 1343) | 170 l/min  |
| Switching time on                                     | 20 ms  |
| Switching time off                                    | 18 ms  |
| Note on materials                                     | RoHS-compliant                                       |
| LABS (PWIS) conformity                                | VDMA24364 zone III                                   |
| Material housing                                      | Cast brass   |
| Material number housing                               | CW617N   |
| Material seals  | FPM  |
| Product weight  | 550 g  |
| Degree of protection                                  | IP65   |
| Corrosion resistance class CRC                        | 1 - Low corrosion stress                             |