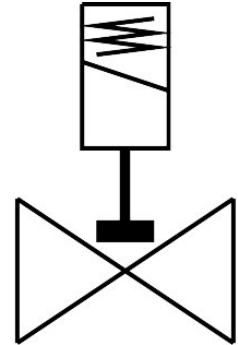


# Solenoid valve

## VZWD-L-M22C-M-G18-15-V-1P4-30

Part number: 1491826

FESTO



## Data sheet

Feature	Value
Design	Directly actuated poppet valve
Type of actuation	Electric
Sealing principle	Soft
Mounting position	optional
Type of mounting	In-line installation
Connection Process valve	G1/8
Electrical connection	Type A Plugs To EN 175301-803 Square design
Nominal size	1.5 mm
Valve function	2/2-way, closed, monostable
Manual override	None
Flow direction	Non-reversible
Medium	Compressed air to ISO 8573-1:2010 [7:4:4] Inert gases Mineral oil Water Neutral fluids Other media on request
Nominal pressure PN	50
Pressure difference	0 MPa 0 bar 0 psi
Characteristic coil data	24 V DC: 6.8 W
Insulation material class	H
Permissible voltage fluctuations	+/- 10 %
Duty cycle	100%
Type of reset	Mechanical spring

Feature	Value
Type of piloting	Direct
Medium pressure	0 MPa...3 MPa 0 bar...30 bar 0 psi...435 psi
Max. viscosity	22 mm <sup>2</sup> /s
Media temperature	-10 °C...80 °C
Ambient temperature	-10 °C...35 °C
Leakage rate to EN 12266-1	A
Flow rate Kv	0.09 m <sup>3</sup> /h
Standard nominal flow rate (standardised to DIN 1343)	95 l/min
Switching time on	25 ms
Switching time off	10 ms
Note on materials	RoHS-compliant
LABS (PWIS) conformity	VDMA24364 zone III
Material housing	Brass
Material number housing	CW614N
Material seals	FPM
Material plunger tube	High-alloy steel
Product weight	300 g
Degree of protection	IP65
Corrosion resistance class CRC	1 - Low corrosion stress
Max. tightening torque for connecting thread	10 Nm
Max. tightening torque for coil fastening	2 Nm