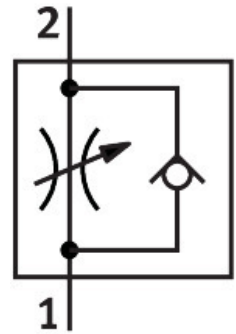


Precision one-way flow control valve GRP-10-PK-3

FESTO

Part number: 12743



Data sheet

Feature	Value
Valve function	One-way flow control function
Pneumatic connection, port 1	PK-3
Pneumatic connection, port 2	PK-3
Type of actuation	Manual
Adjustment component	Rotary knob with scale
Type of mounting	Front panel mounting
Standard nominal flow rate in flow control direction	3.8 l/min
Standard nominal flow rate in blocked direction	95 l/min
Operating pressure	0 bar...8 bar
Ambient temperature	-10 °C...50 °C
Material housing	PA-reinforced
Mounting position	optional
Operating pressure from 2 to 1	0 bar...8 bar
Standard nominal flow rate in throttle direction for 0.1->0 MPa (1->0 bar, 14.5->0 psi)	1.65 l/min
Standard nominal flow rate in return direction for 0.1->0 MPa (1->0 bar, 14.5->0 psi)	15 l/min...50 l/min
Standard flow rate in flow control direction 0.6->0 MPa (6->0 bar, 87->0 psi)	5.2 l/min
Standard flow rate in non-return direction 0.6->0 MPa (6->0 bar, 87->0 psi)	131 l/min
Operating medium	Compressed air to ISO 8573-1:2010 [5:4:3] Inert gases
Note on operating and pilot medium	Lubricated operation not possible
LABS (PWIS) conformity	VDMA24364 zone III
Media temperature	-10 °C...50 °C
Product weight	48 g

Feature	Value
Note on materials	RoHS-compliant
Material seals	NBR PVC
Material retaining bracket	Wrought aluminium alloy
Material PK connections	Wrought aluminium alloy Brass
Material screws	Steel