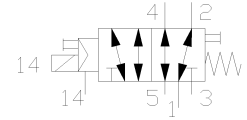
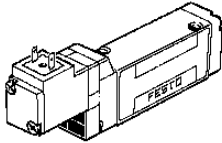


Solenoid MEH-5/2-4,0-S-VI

Part number: 126256

FESTO



Datasheet

Feature	Value
Switching function symbol	5/2-way valve
Switching function short code	5/2
Direction of flow reversible	Yes
Operating principle	Slide
Form function component	Piston
Freedom from overlap	Yes
Type of pilot control	Indirect
Type of setting	Monostable
Type of reset	Mechanical and air springs
Type of mounting	Screw
Number mounting options	1
Nominal size	4 mm
Operating pressure min.	-0,9 bar
Operating pressure max.	10 bar
Minimum ambient temperature	-5 °C
Maximum ambient temperature	50 °C
Minimum temperature of medium	-5 °C
Maximum temperature of medium	50 °C
Start/switchover pilot pressure at D1	3 bar
Connection type main connections	Sub-base
Main port ducted exhaust	Yes
Connection type aux. pilot air supply	Sub-base
Connection type aux. pilot air exhaust	Sub-base
Actuation/reset	Single solenoid, air spring return
Manual override	Non-detenting
Operating status display	No
Standard nominal flow rate 1 - 2	500 l/min
Switching time OFF/OVER (dom.)	10 ms
Switching time OFF/OVER	25 ms
Solenoid system (dimensioning)	E
Type of voltage	../DC
Nominal direct current	24 V
Rating (DC)	0,95 W

Feature	Value
Medium of operation	Filtered compressed air (40 µm) or vacuum
Pilot medium	Filtered compressed air (40 µm)
Degree of protection as per IEC 529 IP	..65