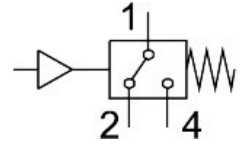


# PE converter VPE-1/8-SW

Part number: 12593

FESTO



## Data sheet

Feature	Value
Conforms to standard	EN 60947-5-1
CE mark (see declaration of conformity)	To EU Low Voltage Directive
UKCA marking (see declaration of conformity)	To UK regulations for electrical equipment
Measured variable	Relative pressure
Measurement method	Pneumatic/electric pressure transducer
Operating pressure	-0.095 MPa...0 MPa -0.95 bar...0 bar
Max. overload pressure	1 bar
Operating medium	Compressed air to ISO 8573-1:2010 [7:4:4]
Note on operating and pilot medium	Lubricated operation possible
Media temperature	0 °C...60 °C
Ambient temperature	0 °C...60 °C
Switching output	Contacting
Switching function	Threshold value with fixed hysteresis
Switching element function	Changeover switch
Switch-on point	-0.25 bar
Switch-off point	0.1 bar
Max. switching frequency	1 Hz
Min. load current	100 mA
Operational voltage range AC	12 V...250 V
Operational voltage range DC	12 V...250 V
Utilisation category - inductive load	AC-14 DC-13
Utilisation category - resistive load	AC-12 DC-12
Electrical connection	3 connector leads
Electrical connection 1, connector system	Open end
Cable length	0.5 m
Material cable sheath	PVC
Type of mounting	On 1n mounting frame Either:
Mounting position	optional

<b>Feature</b>	<b>Value</b>
Pneumatic connection	G1/8
Product weight	38 g
Material housing	PA-reinforced POM Steel VMQ (silicone)
Material switch contact	Silver
Material electrical connection	Tin-plated
Material membrane	Chloroprene rubber
Setting options	Permanently set
Degree of protection	IP67
Insulation voltage	2 kV
LABS (PWIS) conformity	VDMA24364-B1/B2-L
Pollution degree	3