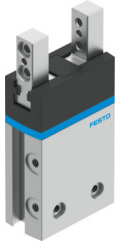


Parallel gripper DHPS-10-A-NC

Part number: 1254042

FESTO



Data sheet

Feature	Value
Size	10
Stroke per gripper jaws	3 mm
Max. replacement accuracy	0.2 mm
Max. angular gripper jaw backlash ax, ay	0.5 deg
Max. gripper jaw backlash Sz	0.02 mm
Rotationally symmetrical	0.2 mm
Repetition accuracy, gripper	0.02 mm
Number of gripper jaws	2
Mounting position	optional
Mode of operation	Double-acting
Gripper function	Parallel
Gripper force back-up	During closing
Design	Lever Force pilot operated motion sequence
Guide	Plain-bearing guide
Position detection	Via proximity switch
Operating pressure	0.4 MPa...0.8 MPa 4 bar...8 bar 58 psi...116 psi
Max. operating frequency of gripper	4 Hz
Min. opening time at 0.6 MPa (6 bar, 87 psi)	58 ms
Min. closing time at 0.6 MPa (6 bar, 87 psi)	24 ms
Max. mass per external gripper finger	60 g
Operating medium	Compressed air to ISO 8573-1:2010 [7:4:4]
Note on operating and pilot medium	Lubricated operation possible (in which case lubricated operation will always be required)
Corrosion resistance class CRC	1 - Low corrosion stress
LABS (PWIS) conformity	VDMA24364-B2-L
Suitability for the production of Li-ion batteries	Metals with more than 5% by mass of copper are excluded from use. Exceptions are printed circuit boards, cables, electrical plug connectors and coils
Ambient temperature	5 °C...60 °C
Mass moment of inertia	0.081 kgcm ²

Feature	Value
Max. force on gripper jaw Fz static	60 N
Max. torque at gripper Mx static	3 Nm
Max. torque at gripper My static	3 Nm
Max. torque at gripper Mz static	3 Nm
Lubrication interval for guide components	10 MioCyc
Product weight	68 g
Type of mounting	Via female thread and centring sleeve Via through-hole and centring sleeve Either:
Pneumatic connection	M3
Note on materials	RoHS-compliant
Material cover cap	PA
Material housing	Hard anodised wrought aluminium alloy
Material gripper jaws	High-alloy stainless steel