

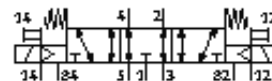
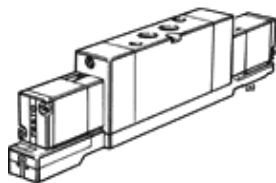
Solenoid valve

MVH-5/3E-1/4-S-B-VI

Part number: 118810

FESTO

With solenoid coil and manual override, without plug socket.



Data sheet

Feature	Value
Valve function	5/3 exhausted
Type of actuation	electrical
Standard nominal flow rate	1,600 l/min
Operating pressure	-0.9 ... 10 bar
Design structure	Piston slide Poppet seat
Type of reset	Air spring
Nominal size	10 mm
Exhaust-air function	throttleable
Sealing principle	soft
Type of piloting	Piloted
Pilot air supply	external
Flow direction	reversible
b value	0.38
C value	6.35 l/sbar
Switching time off	32 ms
Switching time on	44 ms
Operating medium	filtered compressed air, grade of filtration 40 µm, lubricated or unlubricated Vacuum
Medium temperature	-5 ... 50 °C
Pilot medium	filtered compressed air, grade of filtration 40 µm, lubricated or unlubricated
Ambient temperature	-5 ... 50 °C
Mounting type	with through hole
Pilot exhaust port 82	M5
Pilot exhaust port 84	M5
Pneumatic connection, port 1	Sub-base G1/4
Pneumatic connection, port 2	G1/4
Pneumatic connection, port 3	Sub-base G1/4
Pneumatic connection, port 4	G1/4
Pneumatic connection, port 5	Sub-base
Materials note	Contains PWIS substances
Materials information for seals	NBR