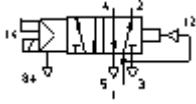


MVH-5-1/4-L-B-VI

Solenoid valve

Feature	Data/description
Design structure	Piston slide Poppet seat
Ambient temperature	-5 - 50 °C
Mounting type	with through hole
Operating pressure	3,000 - 10,000 bar
Medium temperature	-5,0 - 50,0 °C
Operating medium	Filtered compressed air Filtered, unlubricated compressed air, 5 µm filtration Filtered, lubricated compressed air, 5 µm filtration
Valve function	5/2 monostable
Type of actuation	electrical
Flow direction	non reversible
Sealing principle	soft
Exhaust-air function	throttleable
Type of piloting	Piloted
Type of reset	Air spring
Nominal size	10,000 mm
Pneumatic connection, port 1	G1/4
Pneumatic connection, port 2	G1/4
Pneumatic connection, port 3	G1/4
Standard nominal flow rate	1.600,00 l/min
Switching time on	33,0 ms
Switching time off	40,00 ms
Pneumatic connection, port 4	G1/4



MVH-5-1/4-L-B-VI

Solenoid valve

Feature	Data/description
Pneumatic connection, port 5	Sub-base
Materials note	Contains PWIS substances