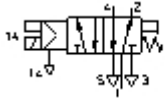


## MVH-5-1/4-S-B-VI

### Solenoid valve

Feature	Data/description
Design structure	Poppet seat
Ambient temperature	-5 - 50 °C
Mounting type	with through hole
Operating pressure	0,000 - 10,000 bar
Medium temperature	-5,0 - 50,0 °C
Operating medium	Filtered, unlubricated compressed air, 40 µm filtration Filtered, lubricated compressed air, 40 µm filtration
Valve function	5/2 monostable
Type of actuation	electrical
Flow direction	non reversible
Sealing principle	soft
Type of piloting	Piloted
Type of reset	mechanical spring
Pilot air supply	external
Nominal size	7,000 mm
Pilot pressure	1,5 - 10,0 bar
Pneumatic connection, port 1	G1/4
Pneumatic connection, port 2	G1/4
Pneumatic connection, port 3	G1/4
Standard nominal flow rate	1.300,00 l/min
b value	0,290
C value	5,500 l/sbar
Switching time on	19,0 ms



## MVH-5-1/4-S-B-VI

### Solenoid valve

Feature	Data/description
Switching time off	41,00 ms
Pilot medium	Filtered, unlubricated compressed air, 40 µm filtration Filtered, lubricated compressed air, 40 µm filtration
Grid dimension	33,000 mm
Pneumatic connection, port 4	G1/4
Pneumatic connection, port 5	Sub-base
Max. switching frequency	30,0 Hz