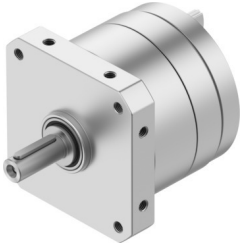


Semi-rotary drive DSM-T-25-270-A-B

Part number: 1145124

FESTO



Data sheet

Feature	Value
Size	25
Swivel angle	0 deg...270 deg
Mounting position	optional
Mode of operation	Double-acting
Design	Vane
Position detection	Via proximity switch
Operating pressure	0.2 MPa...1 MPa 2 bar...10 bar
Max. swivel frequency at 0.6 MPa (6 bar, 87 psi)	2 Hz
Operating medium	Compressed air to ISO 8573-1:2010 [7:-:-]
Corrosion resistance class CRC	0 - No corrosion stress
LABS (PWIS) conformity	VDMA24364-B2-L
Ambient temperature	-10 °C...60 °C
Max. axial force	50 N
Max. radial force	120 N
Theoretical torque at 0.6 MPa (6 bar, 87 psi)	10 Nm
Product weight	890 g
Type of mounting	Via female thread
Pneumatic connection	M5
Note on materials	RoHS-compliant
Material drive shaft	Steel Nickel-plated
Material seals	TPE-U(PU)
Material housing	Wrought aluminium alloy