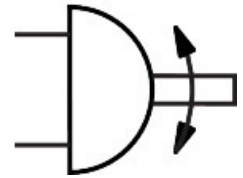
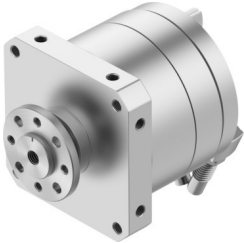


Semi-rotary drive DSM-T-32-270-CC-FW-A-B

Part number: 1145107

FESTO



Data sheet

| Feature | Value |
|--|---|
| Size | 32 |
| Cushioning angle | 12 deg |
| Rotation angle adjustment range | 0 deg...246 deg |
| Swivel angle | 0 deg...246 deg |
| Cushioning | Shock absorber at both ends |
| Mounting position | optional |
| Fine adjustment | -3 deg |
| Mode of operation | Double-acting |
| Design | Vane |
| Position detection | Via proximity switch |
| Operating pressure | 0.2 MPa...1 MPa 2 bar...10 bar |
| Max. swivel frequency at 0.6 MPa (6 bar, 87 psi) | 0.7 Hz |
| Operating medium | Compressed air to ISO 8573-1:2010 [7:-:-] |
| Corrosion resistance class CRC | 0 - No corrosion stress |
| LABS (PWIS) conformity | VDMA24364-B2-L |
| Ambient temperature | -10 °C...60 °C |
| Max. axial force | 75 N |
| Max. radial force | 200 N |
| Theoretical torque at 0.6 MPa (6 bar, 87 psi) | 20 Nm |
| Permissible mass moment of inertia | 0.05 kgm ² |
| Product weight | 2165 g |
| Type of mounting | Via female thread |
| Pneumatic connection | G1/8 |
| Note on materials | RoHS-compliant |
| Material drive shaft | Steel Nickel-plated |
| Material seals | TPE-U(PU) |
| Material housing | Wrought aluminium alloy |