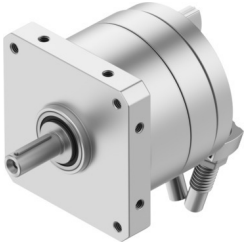


# Semi-rotary drive DSM-T-12-270-CC-A-B

Part number: 1145088

FESTO



## Data sheet

Feature	Value
Size	12
Cushioning angle	15 deg
Rotation angle adjustment range	0 deg...246 deg
Swivel angle	0 deg...246 deg
Cushioning	Shock absorber at both ends
Mounting position	optional
Fine adjustment	-3 deg
Mode of operation	Double-acting
Design	Vane
Position detection	Via proximity switch
Operating pressure	0.25 MPa...1 MPa 2.5 bar...10 bar
Max. swivel frequency at 0.6 MPa (6 bar, 87 psi)	1.5 Hz
Operating medium	Compressed air to ISO 8573-1:2010 [7:-:-]
Corrosion resistance class CRC	0 - No corrosion stress
LABS (PWIS) conformity	VDMA24364-B2-L
Ambient temperature	-10 °C...60 °C
Max. axial force	18 N
Max. radial force	45 N
Theoretical torque at 0.6 MPa (6 bar, 87 psi)	2.5 Nm
Permissible mass moment of inertia	0.008 kgm <sup>2</sup>
Product weight	375 g
Type of mounting	Via female thread
Pneumatic connection	M5
Note on materials	RoHS-compliant
Material drive shaft	Steel Nickel-plated
Material seals	TPE-U(PU)
Material housing	Wrought aluminium alloy