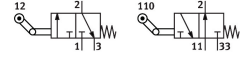


# Toggle lever valve with idle return L/O-3-PK-3

Part number: 10749

**FESTO**



## Data sheet

Feature	Value
Valve function	3/2-way, monostable, open/closed
Type of actuation	Mechanical
Standard nominal flow rate (standardised to DIN 1343)	80 l/min
pneumatic working port	PK-3
Operating pressure	0 bar...8 bar
Design	Piston seat
Nominal size	2.5 mm
Type of piloting	Direct
Operating medium	Compressed air to ISO 8573-1:2010 [:-::-]
LABS (PWIS) conformity	VDMA24364-B1/B2-L
Ambient temperature	-10 °C...60 °C
Actuating force, normally closed	10 N
Actuating force, normally open	13 N
Product weight	19 g
Type of mounting	With through-hole
Pneumatic connection, port 1	PK-3
Pneumatic connection, port 2	PK-3
Pneumatic connection, port 3	PK-3
Material seals	NBR
Material housing	POM